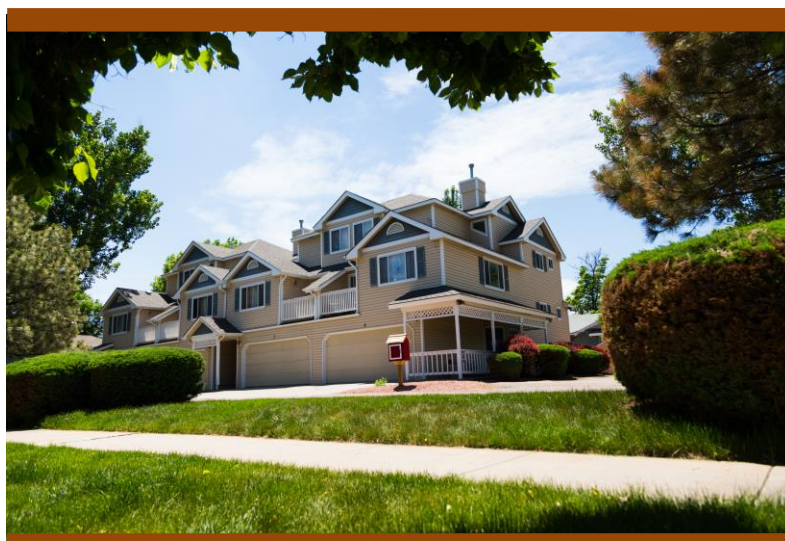


2015

Annual Report



“helping homeless families help themselves”

Location

1206 10th Street, Greeley, CO 80631
(corner 12th Ave. & 10th Street in downtown Greeley)

Contact Information

Jodi Hartmann, Executive Director
Telephone: (970) 352-3215 (Main Number)
FAX: (970) 352-0130
E-mail: jodi@greeleytransitionalhouse.org

Website

www.greeleytransitionalhouse.org





Mission

Our mission is to provide safety, stability, and opportunity for families in crisis through emergency shelter and comprehensive support services.

History

The Greeley Transitional House (GTH) program was established in 1985 through the collaboration of the Greeley Interfaith Association, United Way of Weld County, and local human service agencies in response to an acute lack of services for homeless Weld County families. At the time there were no programs or facilities in the community to accommodate the unique needs of homeless families for shelter and supportive services. The organization is staffed by four full-time and six part-time employees. Funding is provided by federal and state programs (primarily reimbursement for nights of shelter), through private foundations, United Way of Weld County, the City of Greeley, Weld County, businesses, and individuals.

The organization's mission is to provide safety, stability, and opportunity for families in crisis through emergency shelter and comprehensive support services. Today, more than 30 years later, Greeley Transitional House continues to serve homeless families, but the organization has also grown into a comprehensive program providing not only emergency shelter, but also intensive case management, a child/adolescent program, and a multi-level transitional housing supportive services program.

As the Greeley community continues to struggle with the challenges of a high poverty rate, high unemployment, low wages, and lack of affordable housing, the need for our safety net of programs is higher than ever. We are very grateful for the many community partners who help support our work through financial, time, and in-kind donations. We could not do this work without all of you!

2015 Board of Directors

(served full or partial year terms in 2015)

Matt Brucklacher, President
Axis Management

Diane Miller, Vice President
Retired College Administrator

Dr. Laura Connolly, Secretary
University of Northern Colorado

Nicole Watkins, Treasurer
Aliquam Financial Services

Tiffany Hettinger
Banner Health/NCMC, Inc.

Polly Kurtz
UC Denver, Dept. Family Medicine

Jessica Yarnell
Kaiser Permanente

Kevin Minner
FirstBank

Bianca Fisher
Greeley Downtown Dev. Authority

Ryan Kamada
Grant, Hoffman & Kamada PC

Rev. Ben Konecny
First Congregational Church

Travis Gillmore, Ex-officio
Phelps-Tointon, Inc.

Community Impact

GTH is much more than just a shelter for homeless families. Donor funds are used to provide a comprehensive program designed to assist homeless families in helping themselves....to assist them in moving from crisis to self-sufficiency. This is accomplished through intensive case management, immediate and long-term goal-setting, life-skills training, and commitment to a self-sufficiency plan. Our intake/ enrollment process is designed to identify families who are highly motivated to move from a position of instability and dependence on public programs to emotional stability and economic self-sufficiency as rapidly as possible. While at the shelter they receive weekly case management where they develop a self-sufficiency plan and set goals for improving their situation – primarily through securing employment (if unemployed) and finding “permanent” affordable housing. Families are eligible to stay at the shelter for up to 60 days, as long as they are making progress on these goals. The entire family attends life skills classes taught by other human service agencies and/or public education programs two evenings a week while living at the shelter. Once the families leave the shelter, they have the option of enrolling in one of our multiple transitional housing programs through which they receive weekly and monthly visits from our transitional housing case manager to provide on-going support and encouragement, assessment of needs, frequent goal-setting, referrals, advocacy, and in some cases, direct financial assistance.

In 2015 we provided 13,488 individual nights of shelter to 77 families. We provided shelter for 294 individuals (121 adults and 163 children). The total number of families served continued to be lower than in past years because we continued to see an acute shortage of affordable housing in the community and families simply had to stay longer as they searched for housing. This longer length of stay is reflected in the 13,000+ individual nights of shelter, which far exceeds our highest previous years. We were simply full nearly every day the entire year. We provided 88 Life Skills classes and approx. 1,232 hours of case management to the adults while living at the shelter. The children also received a variety of services including case management, twice-weekly activity nights, tutoring, advocacy, school intervention, holiday and birthday celebrations, and assistance with toys, equipment, diapers, food and clothing. An additional 84 families were served through our post-shelter transitional housing programs. These programs provided multi-levels of on-going case management for up to two years to support families after they leave the shelter, as well as other families in crisis in the community (Champions program) in their efforts to remain self-sufficient. These programs served 115 adults and 144 children in 2015. Over 1,900 client meetings or contacts occurred providing 2,019 hours of case management to the families in these transitional housing programs.

These programs continued to have very good outcomes in helping families become self-sufficient. Over 81% of the families who received emergency shelter in 2015 found permanent, affordable housing (it just took longer for them to find that housing). Employment opportunities were strong in 2015 in Weld County, and 92% of the families we served found employment before leaving the shelter. One hundred percent (100%) of the school-aged children regularly attended school while living at the shelter, and 100% of the families received referrals and assistance in enrolling in all eligible services for basic needs to enable them to stabilize their family. Ninety percent (95%) of the families in our transitional housing programs reported being stable in their housing/ employment for up to one year after leaving the shelter. Our recidivism rate continues to be very low with these programs. Once families receive the support and resources they need to stabilize their financial situation they rarely return to the shelter.

	2005	2006	2007	2008	2009	2010	2011	2012	2013	2014	2015
Families served by Emergency Shelter Program	77	85	100	82	96	93	80	82	80	76	77
Individuals served by Emergency Shelter Program	254	291	303	288	309	271	234	274	260	255	294
Individual Nights of Shelter Provided	10,295	10,768	10,351	10,972	10,503	10,986	11,792	11,988	11,927	11,287	13,488
Families Served by Transitional Hous. Programs	71	65	55	45	47	95	139	102	90	107	84
Individuals served by Transitional Hous. Programs	280	253	227	162	180	357	478	359	282	354	259

The GTH Program

The Greeley Transitional House is the only homeless shelter in Greeley offering residential emergency and transitional shelter, case management, and follow-up programs for homeless families. We are located in a condo-style facility near downtown Greeley. The building has the capacity to house 12 families at a time with private



bedrooms/baths and shared kitchens and living rooms. The shelter was established in 1985 in response to community concerns for the need to find shelter for temporarily displaced families. These families find themselves homeless after unexpected loss of employment, farm or business foreclosures, overwhelming medical bills, domestic violence, and increasingly, lack of affordable housing combined with low wages.

Whatever the reasons behind a family's homelessness, the Greeley Transitional House provides a positive, hopeful, and supportive environment in which families in crisis can live temporarily while re-establishing their independence.

Understanding Homelessness

Who are the homeless families that we serve?

Homelessness is a complex social issue with many different causes. The families that come to our shelter have a variety of circumstances that have led to their homelessness.

- Ninety-nine percent (99%) of our clients are the working poor – meaning the family has sporadic employment, but that employment is not adequate or stable enough for the family to become self-sufficient.
- Most are employed in retail or service positions paying between \$9.50 and \$12.50 per hour. It takes 2.5 wage earners at these wages to afford an average priced two-bedroom apartment in Greeley (approx. \$1,020/mo.)
- All of our Emergency Shelter residents are drug and alcohol free (a requirement for entering our program)
- Forty-nine percent (49%) are single-parent families and 39% are two parent families
- Most of the adults are young – 54% are age 18 to 30, and 51% are Hispanic
- The majority of clients served come from Greeley/Evans (55%) and surrounding Weld County communities (15%). About 21% of our clients come from other parts of Colorado (primarily metro Denver) or from out of state. This percentage has increased dramatically in recent years due to the influx of workers coming to Weld County for job opportunities, and then becoming stranded when they do not qualify for those jobs.

Who is eligible for our Emergency Shelter Program?

Any family, regardless of age, race, religion, color or creed, who is in need of temporary emergency housing, is eligible. The family must demonstrate that no other housing is available to them and that they are highly motivated to establish independent living as quickly as possible. Additionally, they must be willing to pursue an action plan for establishing self-sufficiency.

AGENCY GOALS & OBJECTIVES – 2015

The following administrative goals/objectives were adopted by the Board of Directors at its annual strategic planning retreat in November 2015, for implementation in 2016. The goals were accompanied by action steps with specific time lines and persons responsible in order to insure that progress is made towards achieving these goals in 2015.

- **Goal #1:** Ensure employee retention and recruitment of high-quality employees
- **Goal #2:** Broaden the organization’s revenue base

In addition, the following program goals/outcomes were established for 2015:

- Provide shelter for at least 80 homeless families (285 individuals) for up to 60 days
- 85% of emergency shelter resident families will obtain permanent affordable housing after completion of the emergency shelter and self-sufficiency program.
- 85% of emergency shelter resident families will be employed or enrolled in education/training after completion of the emergency shelter and self-sufficiency program.
- Provide support to 25 new families in our follow-up transitional housing programs to help them remain stable in their housing and other basic needs and prevent re-occurring homelessness.
- Work with families in our transitional housing programs to receive a 75% success rate for these families in remaining stable in their housing and other basic needs two years after enrolling in these programs.

AGENCY PERSONNEL



Executive Director	Jodi Hartmann
Office Manager	Teddy Sanchez
Case Manager	Maria Hernandez
Child/Adolescent Program Case Mgr.	Jessica Fernandez (Intern)
Child/Adolescent Activities Coordinator	Makayla Crespin
House Managers	Emma Lee Muniz Rhonda White Wilbur White Robert Aldridge Candy Mustian

Major Contributors 2015

(Corporations & Foundations)

Daniels Fund	Private Foundation	General Operating	\$25,000
Monfort Family Foundation	Private Foundation	General Operating	\$20,000
George Doering Foundation	Private Foundation	General Operating	\$15,000
A.V. Hunter Trust	Private Foundation	General Operating	\$12,500
Helen & Arthur Johnson Foundation	Private Foundation	General Operating	\$7,500
Envirotech Services, Inc.	Corporate Donor	General Operating	\$5,500
CARHOF (Colo. Assoc. of Realtors)	Private Foundation	General Operating	\$5,000
Anschutz Family Foundation	Private Foundation	General Operating	\$5,000
Flood & Peterson Insurance	Corporate Donor	General Operating	\$4,000
Pioneer Press	Corporate Donor	General Operating	\$3,575
Sam S. Bloom Foundation	Private Foundation	General Operating	\$3,500
Hensel Phelps Construction	Corporate Donor	General Operating	\$3,000
University of Colorado Health	Corporate Donor	General Operating	\$3,000
NCMC, Inc.	Corporate Donor	General Operating	\$3,000
Shirazi Benefits LLC	Corporate Donor	General Operating	\$3,000
Ernest Martin Family Fund	Private Foundation	General Operating	\$2,000
W.D. Farr Family Fund	Private Foundation	General Operating	\$2,000
Phelps-Tointon, Inc.	Corporate Donor	General Operating	\$2,000
Zarlengo-Raub, LLP	Corporate Donor	General Operating	\$1,500
Catering by Kenny's	Corporate Donor	General Operating	\$1,500
Anadarko	Corporate Donor	General Operating	\$1,500
Cardiovascular Institute, NCMC	Corporate Donor	General Operating	\$1,500
Ehrlich Family of Dealerships	Corporate Donor	General Operating	\$1,500
Andersen Sales & Salvage	Corporate Donor	General Operating	\$1,500
Banner Health/NCMC, Inc.	Corporate Donor	General Operating	\$1,500
Ottercares Foundation	Corporate Donor	General Operating	\$1,500
Axis Management LLC	Corporate Donor	General Operating	\$1,500
ReMax of Northern Colorado	Corporate Donor	General Operating	\$1,500
Burriss Company	Corporate Donor	General Operating	\$1,500
4 Rivers Equipment	Corporate Donor	General Operating	\$1,500
Noble Energy	Corporate Donor	General Operating	\$1,500
First National Bank	Corporate Donor	General Operating	\$1,000
Renaissance Insurance	Corporate Donor	General Operating	\$1,000
FirstBank	Corporate Donor	General Operating	\$1,000

2015 Financial Statement

(unaudited)

Revenue

Private Foundation Funding	\$ 98,900
Federal Program Reimbursements (HUD/FEMA)	84,000
Weld County Emergency Shelter CSBG Funding	15,000
City of Greeley	7,000
United Way of Weld County	59,600
Individual & Board Member Donations	31,000
Corporate Donations (excluding sponsorships)	1,700
Church Donations	4,300
Special Event Fundraisers	134,650
Fee for Services	6,600
In-kind Donations	8,100
Miscellaneous Income	<u>1,975</u>
Total	\$452,825

Expenses

Management & General	\$ 39,320
Program Services	345,150
Fundraising Expenses	<u>52,430</u>
Total	\$436,900

Net Ordinary Income \$15,925

Percentage of Admin./Fundraising Expenses (AFR) 21%

2015 Year End Net Assets (unaudited) \$570,492

2015 Board Attendance

Board Meetings were held on the 2ND Wednesday of the month at 5:30 p.m.
at ACM Board Room, 2015 Clubhouse Drive, Suite 203 P=Proxy

Board Member	1/14/15	2/11/15	3/11/15	4/8/15	5/13/15	6/10/15	NO MEETINGS July & August	9/9/15	10/14/15	11/3/15	12/9/15	% Mtgs Attended	
Matt Brucklacher	X	X			X	X	<i>The Board of Directors made a decision not to conduct regular business meetings in July and August in order for the Board to focus on the planning/ implementation of our major fundraiser (Summerfest) in August. However the Exec. Comm. did meet monthly throughout this period to review financials and other critical matters</i>		X			62%	
Diane Miller	X	X	X	X	X	X		X	X	X	X	X	100%
Laura Connolly	X	X	X	X	X			X	X			X	80%
Nicole Watkins	P	X	X	X	P			X					50%
Tiffany Hettinger	P	P	X		X	X		X	X	X			60%
Polly Kurtz	X	X	X	X	P	X		X				X	70%
Jessie Yarnell	X	X	X	X	P	X		X	X	X	X	X	90%
Kevin Minner	X	X	P		X			P	X	X	X	P	50%
Bianca Fisher	X	X		X	X			X	X	X	X	X	80%
Ryan Kamada	X		X	X									n/a
Ben Konecny										X	X	100%	

% of Board In Attend.	80%	80%	70%	70%	66%	55%		77%	77%	75%	75%	73%
												Average Attendance